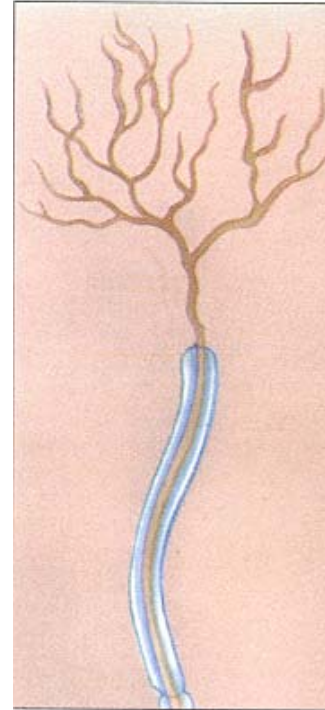
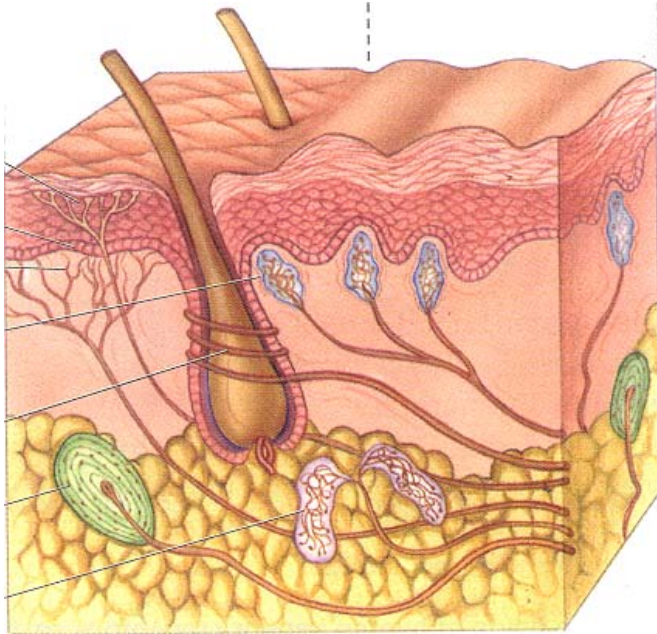
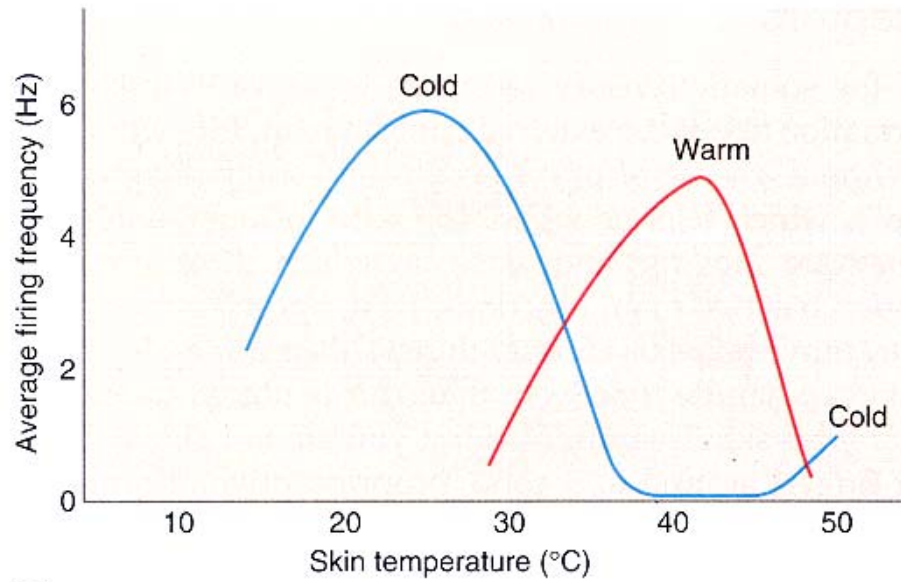


spezielle Sinne der Temperaturwahrnehmung

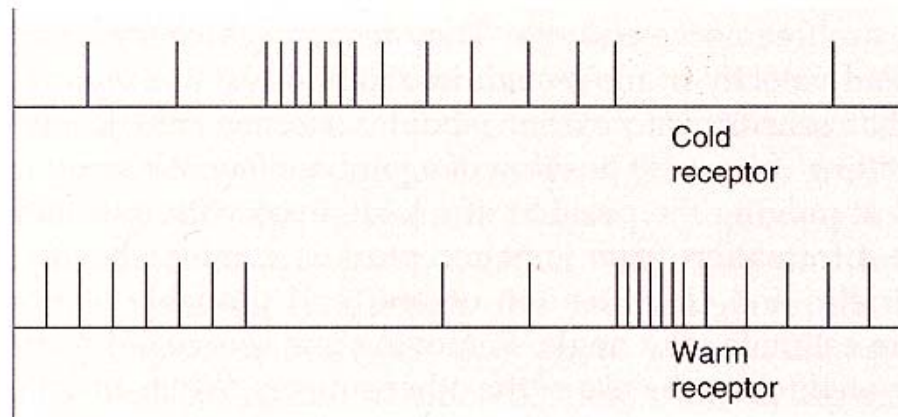
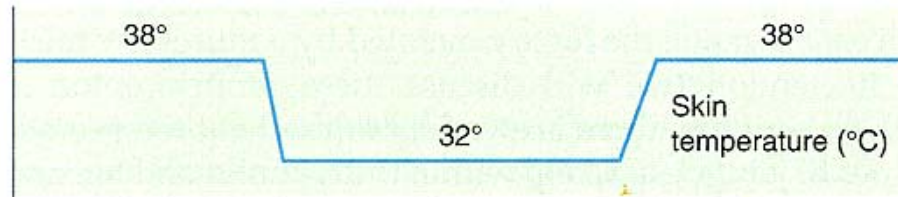
Thermorezeption



Freie Nervenendigungen

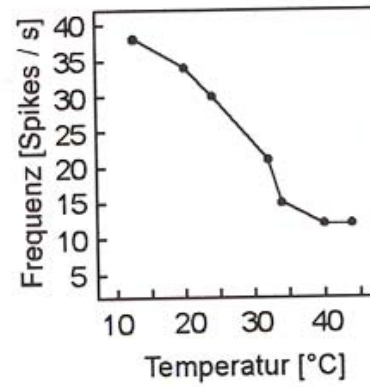
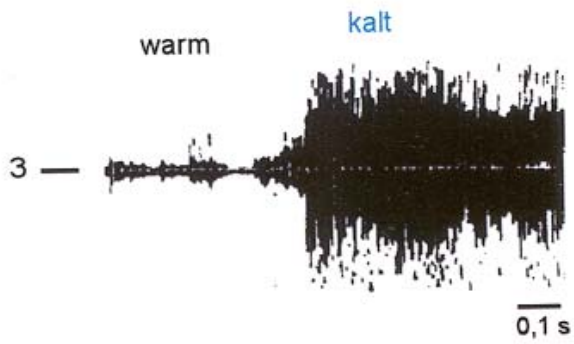
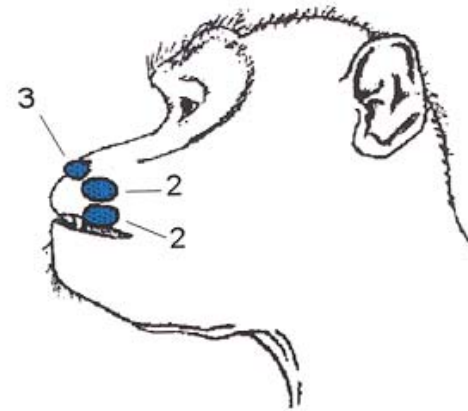
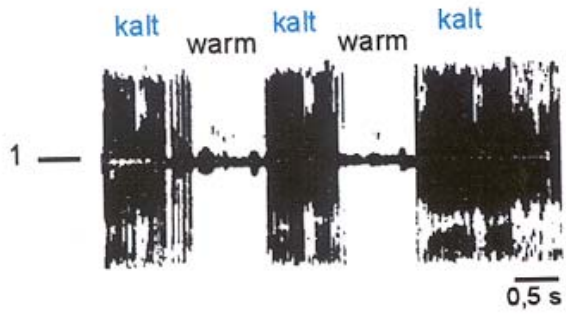


(a)



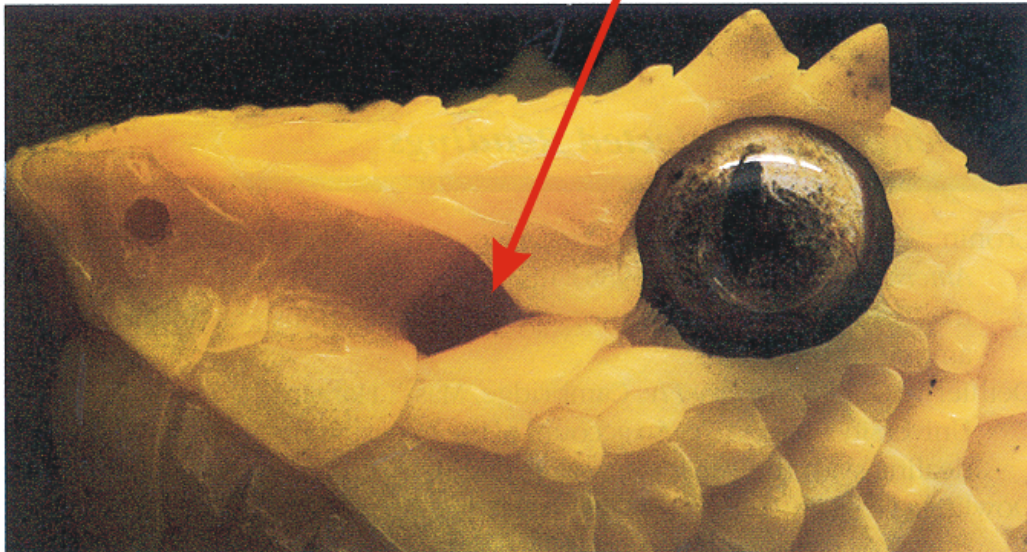
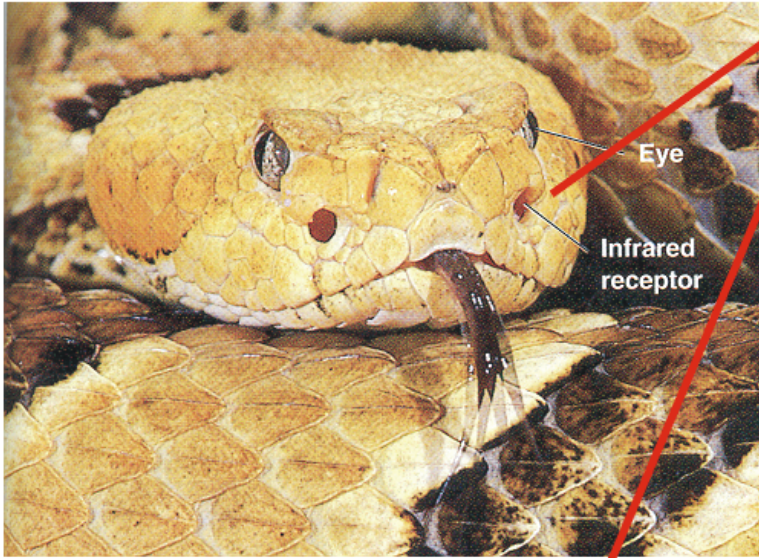
5 sec

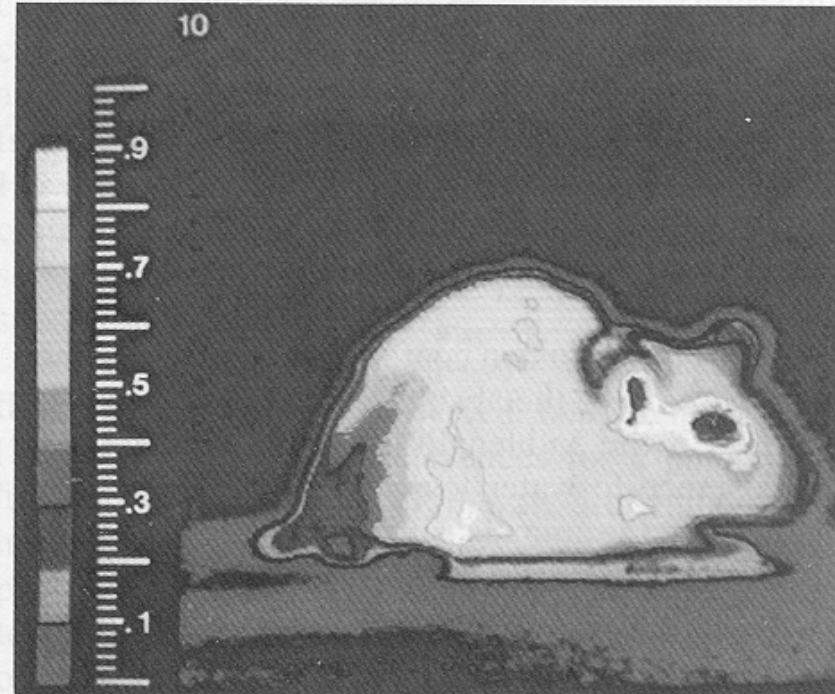
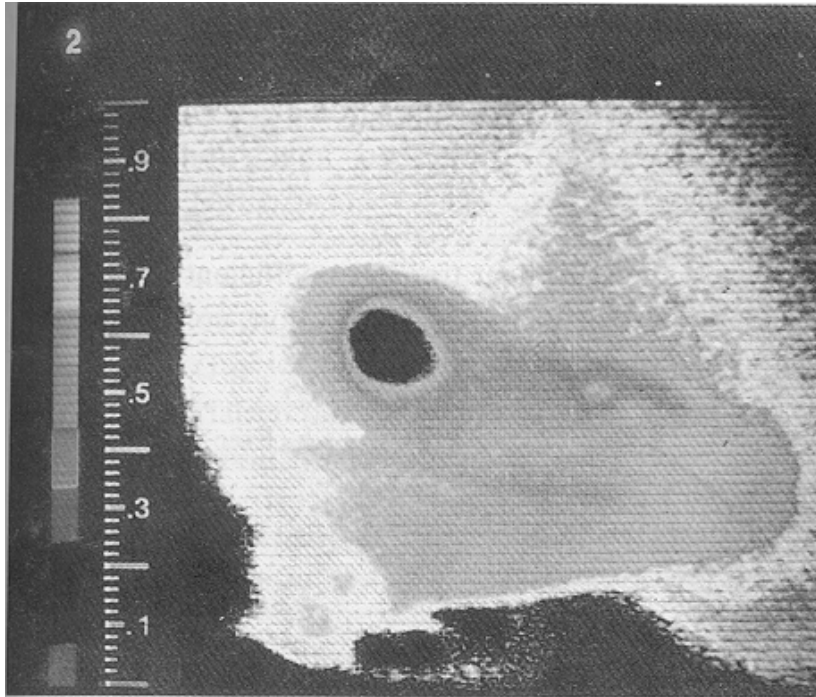
(b)



A

Grubenorgane



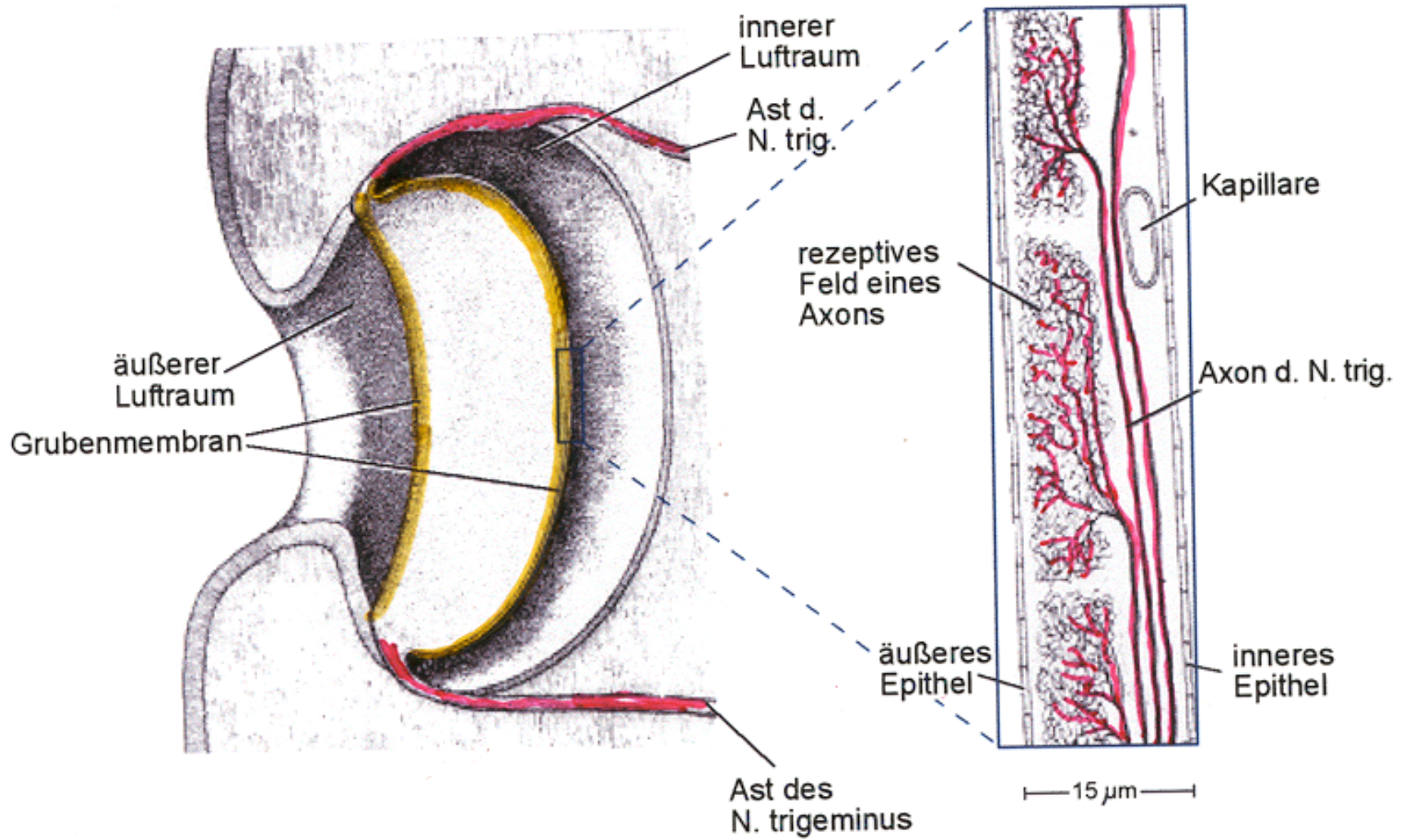


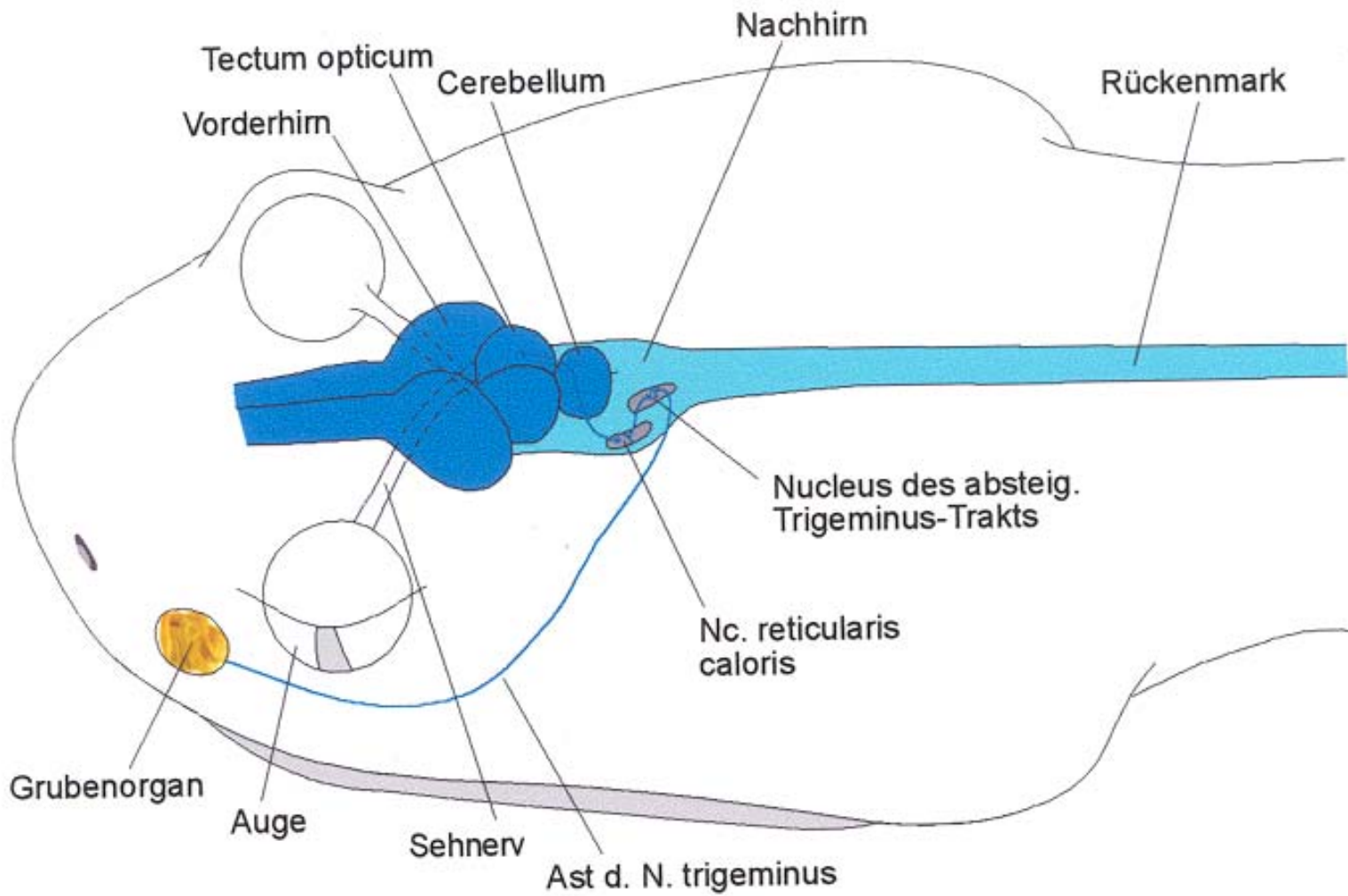
Thermobilder

Graustufen entsprechen der Erhöhung der Oberflächen-Temperatur über Hintergrund von 25°C

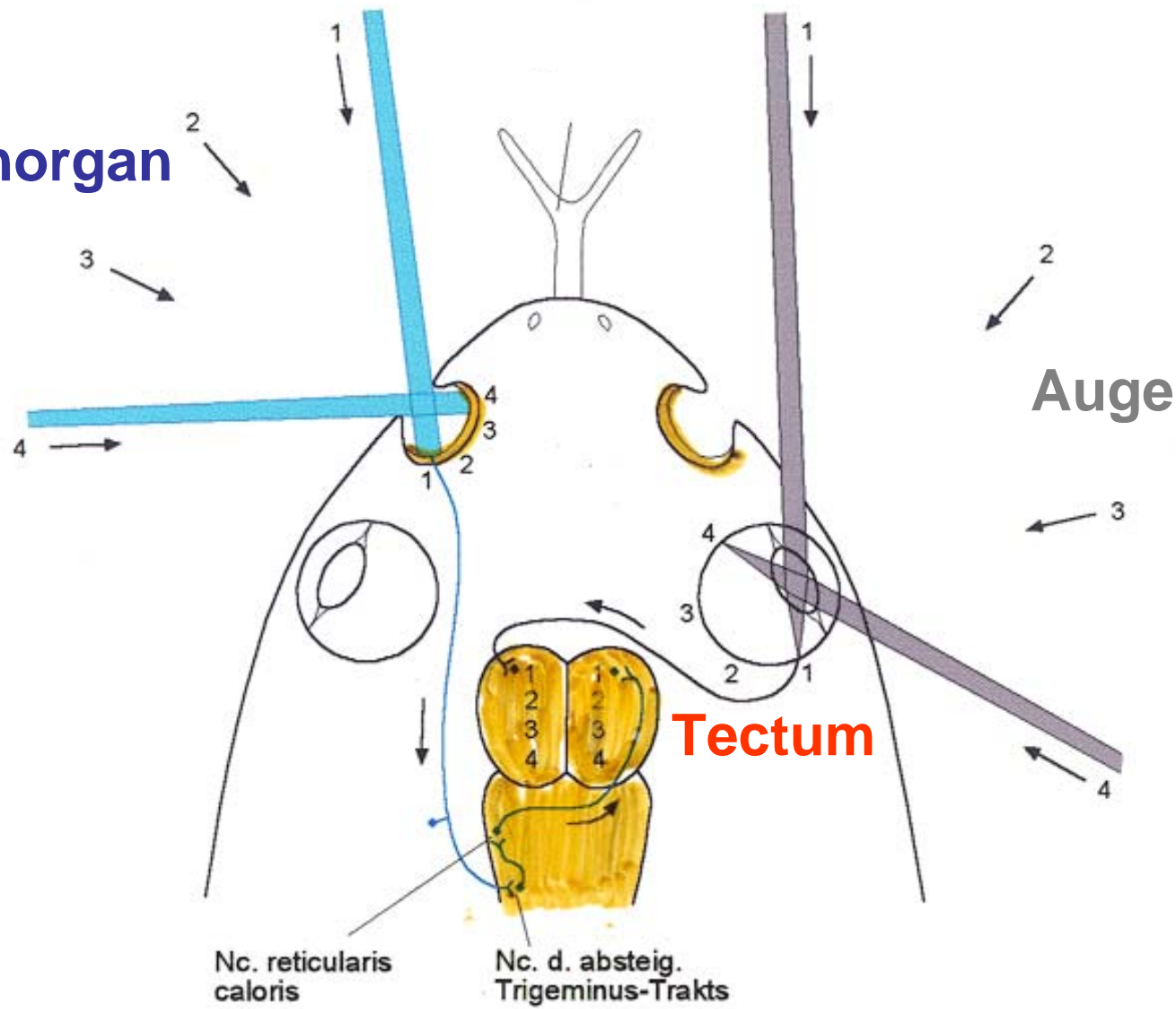
Skala 2°C für Eidechsenkopf

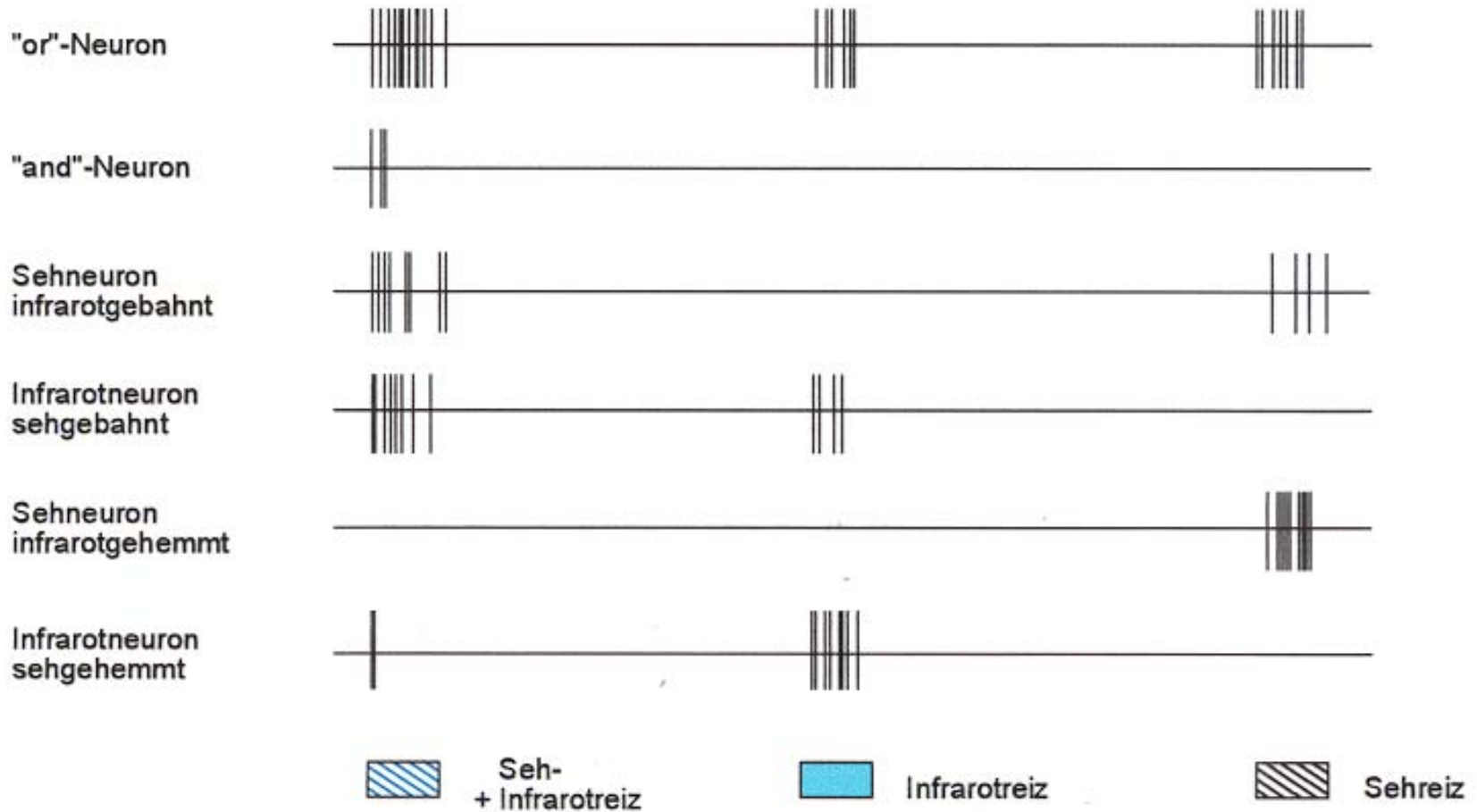
Skala 10°C für Maus





Grubenorgan





Melanophila

